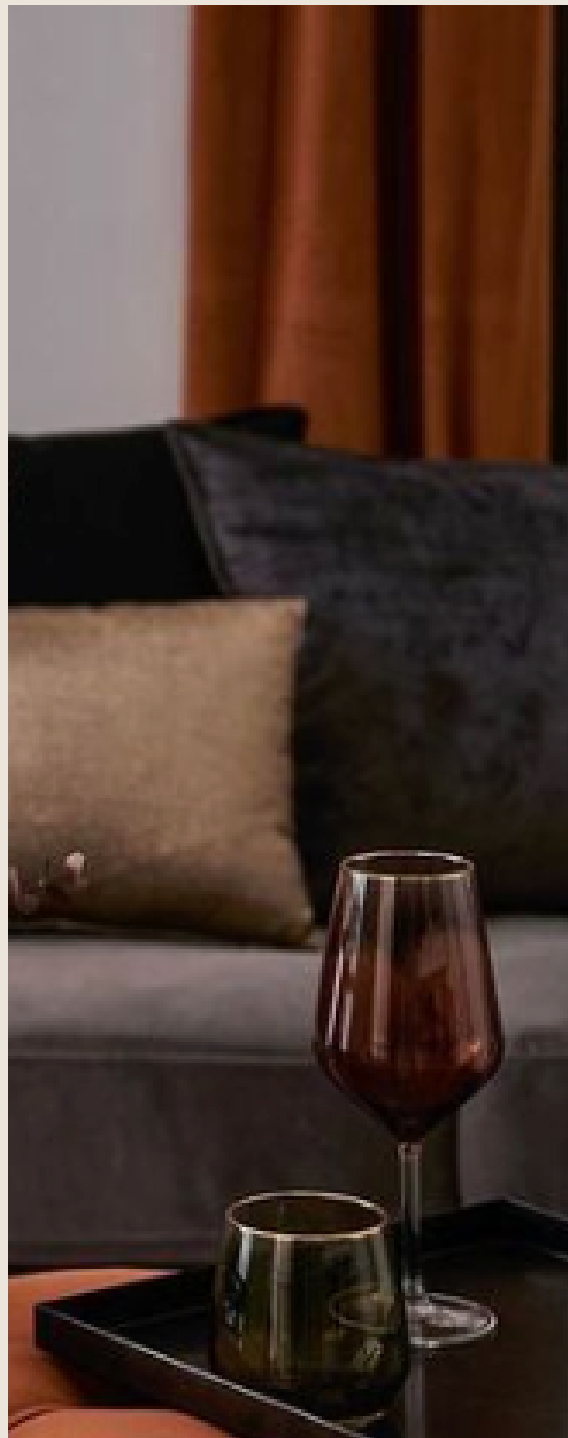


OneTa Design by Leila Fatalian

Garage Studio Conversion Project

Danish Rizvi





INDEX

- 03 Welcome Statement
- 04 About Designer
- 05 Client + Project Overview
- 06 Client Goals
- 07 Project Inspiration
- 08 Site Overview
- 09 Project Scope
- 10 Design by Room
- 23 Material Selection
- 27 Shopping List
- 28 Next Steps

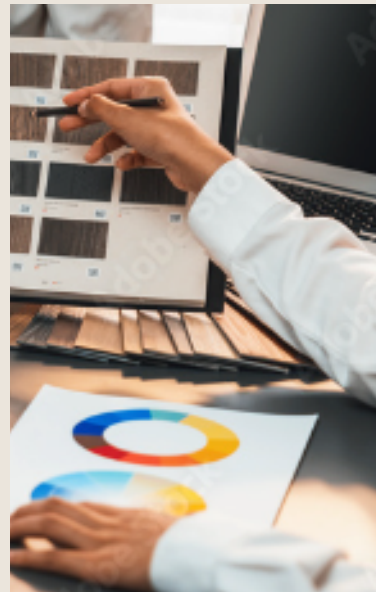
OneTa Design

WELCOME

Welcome to the Garage Studio Conversion Project, an innovative exploration of design that seamlessly merges functionality with aesthetic allure. This journey is about transforming a conventional garage into a captivating studio space, inspired by the timeless elegance of mid-century style, and accentuated with a dynamic palette of burnt orange and black.

Join us as we embark on this exciting adventure, bringing this vision to life and creating a space that not only inspires but also deeply connects with your personal sense of expression.

OneTa Design



MEET YOUR DESIGNER

Leila Fatalian

Certified interior designer dedicated to transforming spaces into reflections of personality and style. With a passion for blending functionality with aesthetics, I've been helping clients turn their houses into homes that not only look beautiful but also feel uniquely theirs.

OneTa Design



CLIENT + PROJECT OVERVIEW

The project focuses on transforming a three-car garage into a versatile studio space, catering to the diverse needs of our client's family. The primary purpose is to create a comfortable and accessible living area for the client's father-in-law, who is in his 80's. It's essential that the design facilitates easy movement, with straightforward access to the kitchen and bathroom to ensure his comfort and safety. Additionally, the space will serve as a retreat for the client's son in his mid 20's when it's not in use by the father-in-law. The design will lean towards darker, masculine tones, incorporating elements that speak to his style, yet it will retain a touch of softness to welcome any guest.

This project marries functionality with style, aiming to craft a space that is both practical for its elderly user and appealing to a younger demographic.

OneTa Design

CLIENT GOALS

I

Design for Accessibility and Comfort: Create a living space that is easily navigable for an elderly individual, with special attention to safe and straightforward access to essential areas like the kitchen and bathroom.

II

Versatile and Stylish Design: Develop a design that balances darker, masculine aesthetics with softer touches, ensuring the studio appeals to both the client's father-in-law and son, as well as any potential guests.

III

Ensure Durability and Low Maintenance: Select materials and finishes that are not only stylish but also durable and easy to maintain, accommodating the studio's varied use while minimizing upkeep for the family.

OneTa Design

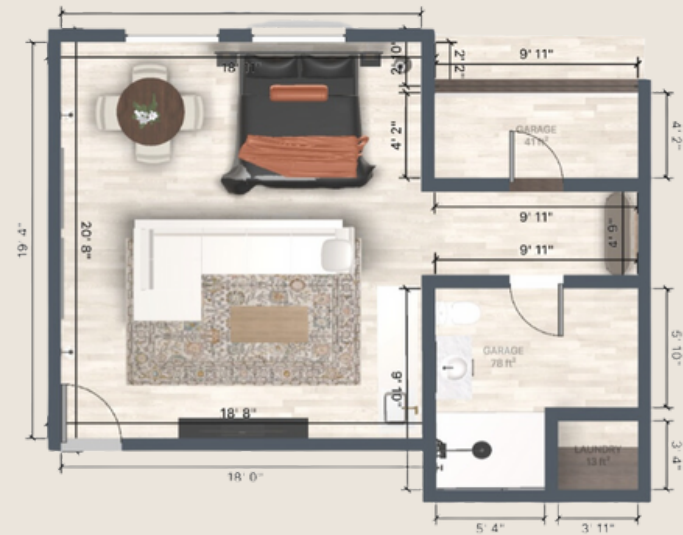
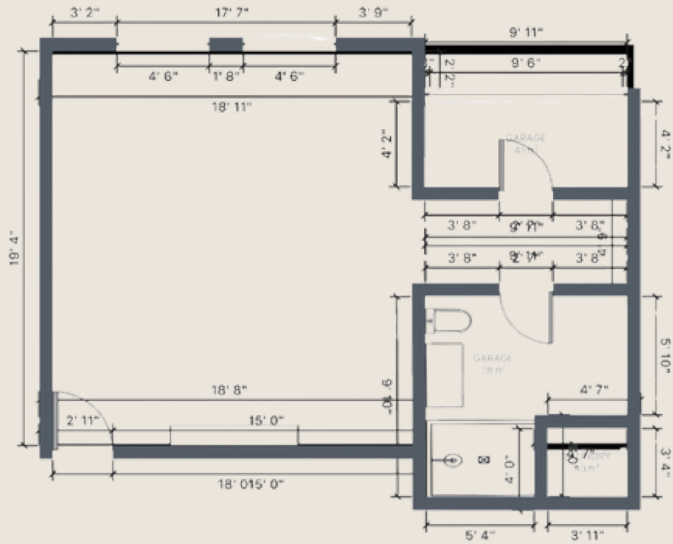
PROJECT INSPIRATION



OneTa Design

SITE OVERVIEW

Danish Rizvi Garage



OneTa Design

PROJECT SCOPE

I

Construction and Layout Redesign: Hire contractors to remove any existing non-essential structures, followed by the construction of drywalls to delineate different areas within the space, such as kitchenette, bathroom, and living area

II

Installation of Essentials: Equip the space with necessary utilities and aesthetic touches to make it habitable and inviting. Such as flooring installation, plumbing and electrical work, and painting and install windows to provide natural light

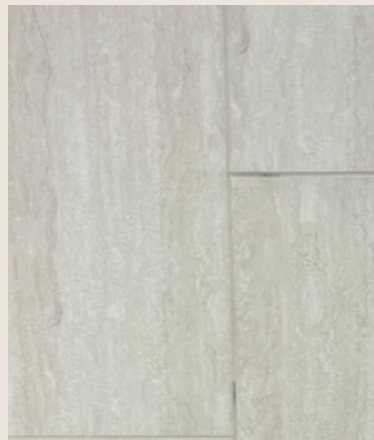
III

Furnishing and Final Touches: Finalize the studio conversion by furnishing and decorating the space to make it livable. Conduct a final walk-through to ensure all elements are completed to satisfaction and space is ready to use

OneTa Design

Style: Modern Industrial

The Living Room



OneTa Design

KEYWORDS

Dark & Moody

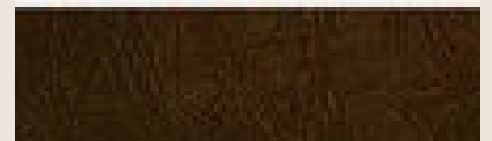
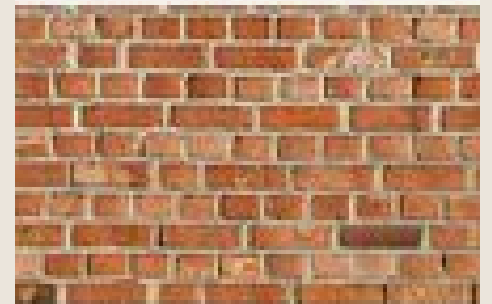
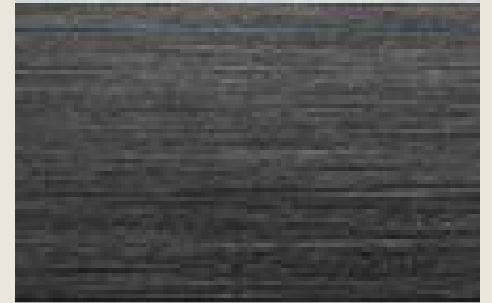
Contemporary

Textured

Cozy

Layered

Warm lighting



OneTa Design



Stone Look Tile



Charcoal Gray paint



Oak Wood

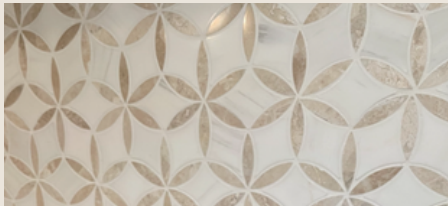


Concept Statement

This concept harmonizes natural elements with modern functionality, creating an ambiance that is both grounding and invigorating. Earthy tones blend with the raw beauty of oak wood, while sleek lines introduce contemporary sophistication.

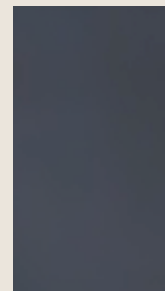
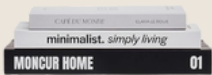
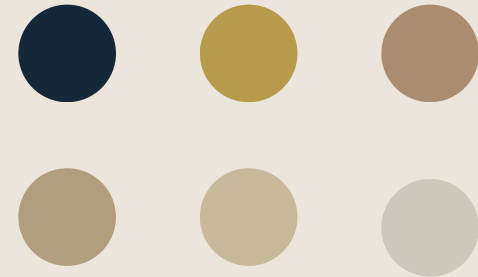


OneTa Design

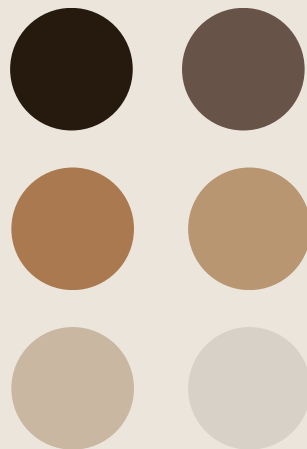
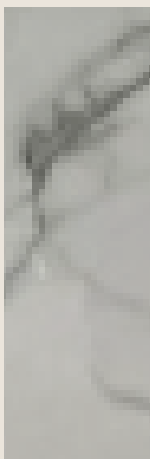
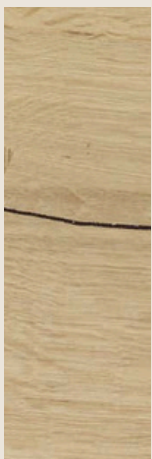


CONCEPT STATEMENT

In this design, we are threading together the essence of modern minimalism with the organic richness of natural textures. Accents of greenery breathe life into the space. This approach is not just about aesthetics but creating a space that resonates with peace and simplicity.



OneTa Design



OneTa Design

CONCEPT

Modern Industrial



OneTa Design

CONCEPT

Modern Industrial



OneTa Design

CONCEPT

Modern Industrial



OneTa Design

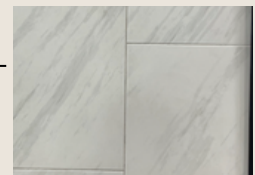
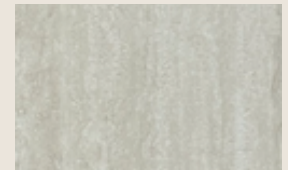
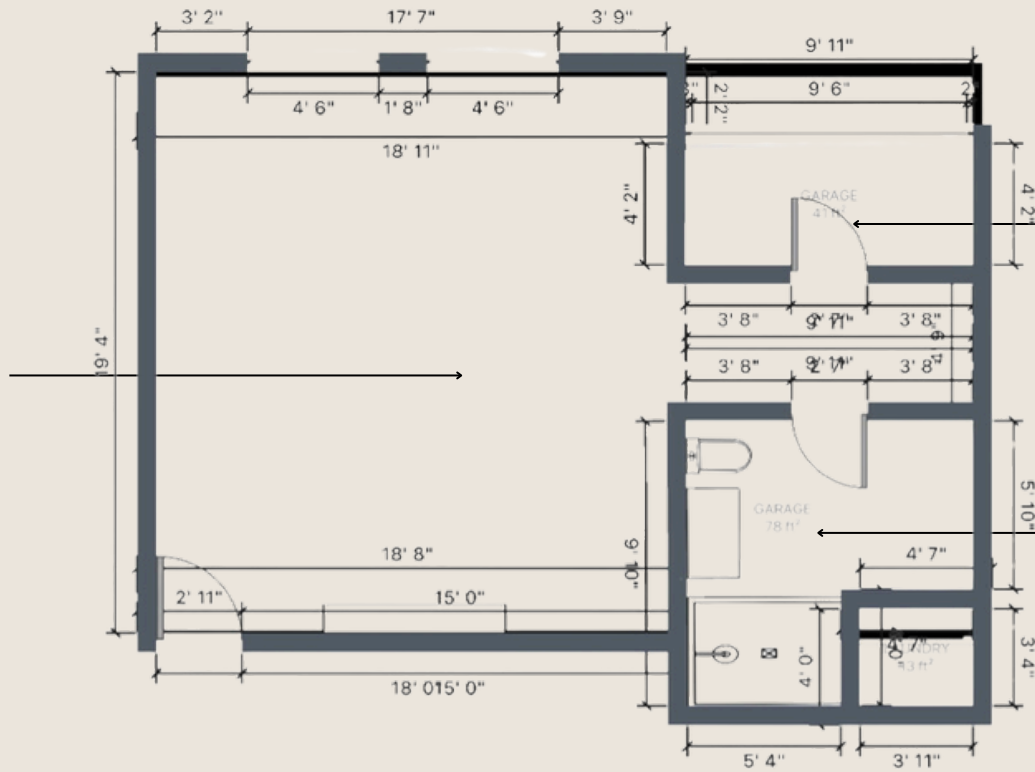
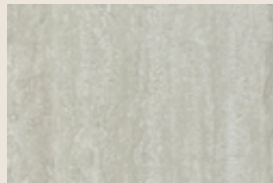
CONCEPT

Modern Industrial

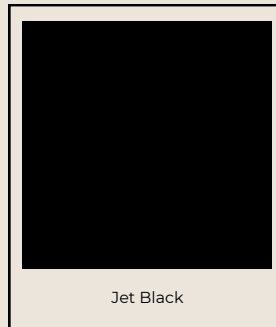
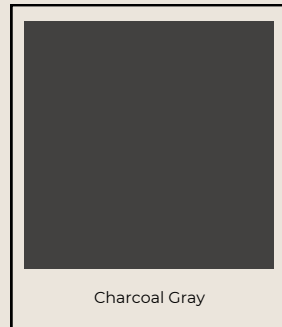
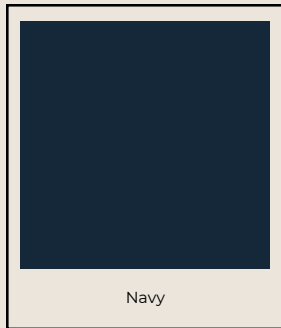


OneTa Design

FLOOR FINISHES



OneTa Design



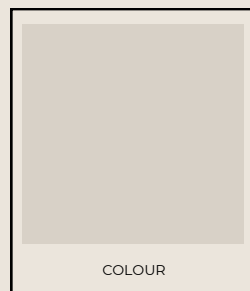
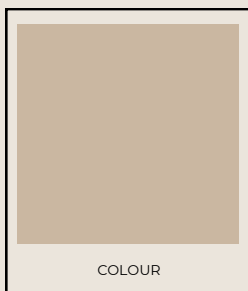
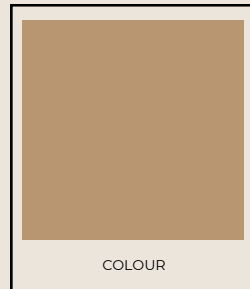
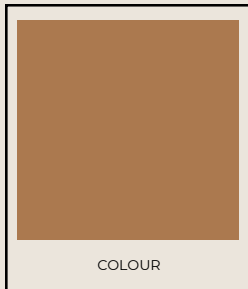
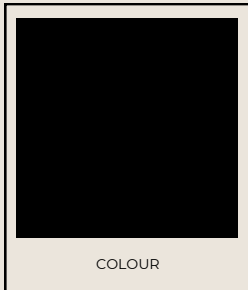
LIVING ROOM COLOR PALETTE

In this color palette, we weave together the stoic serenity of navy blue, the nurturing warmth of beige, and the modern sophistication of charcoal gray to create a harmonious symphony of shades that resonate with emotional depth and balance.

It's a palette that echoes the natural world's balance; the stability of the night sky, the grounding earth, and the structured of urban design.

This curated collection of colors is designed to create a cohesive and tranquil environment that complements natural materials and modern finishes.

OneTa Design



BATHROOM COLOR PALETTE

For this refined and earthy bathroom color palette, the grounding richness of black provides a bold statement, complementing the organic essence of espresso brown. Together, these colors establish a bathroom that's both luxurious and cocooning.

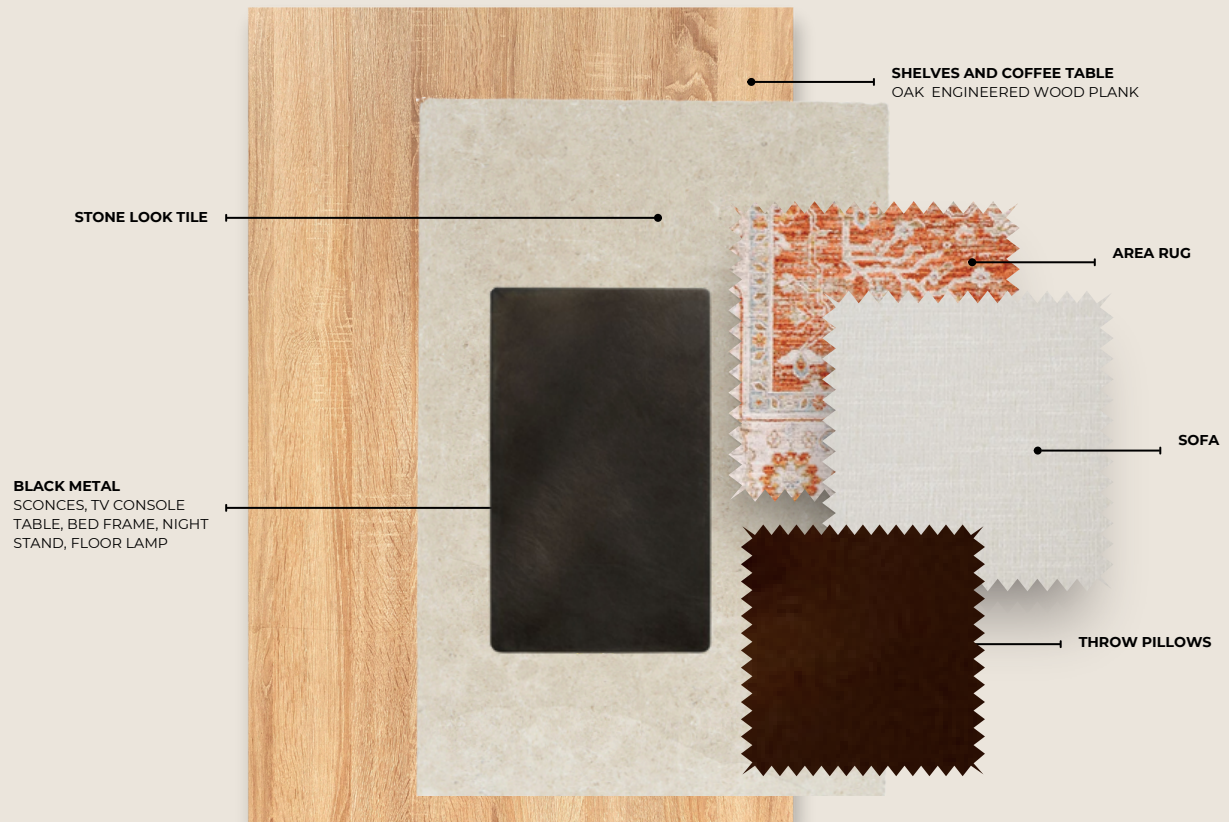
This palette harmonizes to craft an atmosphere that is both nurturing to the soul and pleasing to the eye, making every moment in the bathroom an indulgent experience.

OneTa Design

MATERIAL SELECTION

Living Room

The chosen materials and finishes for this design project are curated to balance functionality with aesthetic appeal, creating a cohesive and inviting space. The stone-look tile offers a robust and easy-to-maintain surface that complements the natural warmth of the oak engineered wood planks used for shelving and the coffee table. Black metal accents in the sconces, TV console table, bed frame, night stand, and floor lamp introduce a sleek, modern contrast, infusing the space with a contemporary edge while maintaining an industrial chic. Complementing this are the throw pillows and area rug, which not only add a layer of comfort but also inject color and pattern to enrich the room's texture and color palette.



OneTa Design

MATERIAL SELECTION

Kitchen

In this design project, we harmonize practicality with aesthetic allure through our material and finish selections. The midnight blue cabinetry provides a dramatic yet enduring foundation, complemented by the enduring beauty of quartz countertops. The modern brushed brass pulls introduce a tactile elegance, while the white and gold backsplash adds a luminous, textural counterpoint. Complementing the ensemble, the oak wood floating shelves invite warmth into the space.



OneTa Design

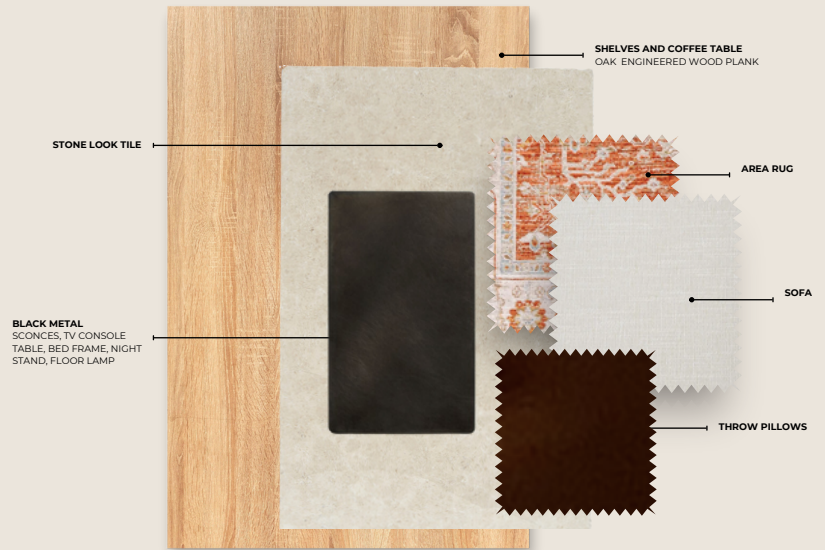
MATERIAL SELECTION

Bathroom

The warm tone floor provides a rich, inviting base that contrasts elegantly with the pristine white marble used for the bathroom and shower walls. This marble is not only visually stunning, with its subtle veins adding depth and interest, but also durable and water-resistant, making it ideal for wet environments. The use of black metal for hardware, such as handles and taps, adds a modern touch that contrasts sharply with the lighter tones, grounding the space and adding a sleek, contemporary feel. The choice of materials for the vanity and closet integrates seamlessly with the overall palette, ensuring that the space remains coherent while exuding a sense of refined luxury.















OneTa Design



SHOPPING LIST

Living Room

PRODUCT LINK	PRODUCT CODE	COLOUR	SUPPLIER	COST	QTY	TOTAL	PRODUCT LINK	PRODUCT CODE	COLOUR	SUPPLIER	COST	QTY	TOTAL
	CALAIS VANILLA	BEIGE	LIVING SPACE	\$795	1	\$795		TV TABLE	BLACK	IKEA	\$230	1	\$230
	BED WITH HEADBOARD	BLACK	IKEA	\$960	1	\$960		WALL ART	MULTIPLE	17 STORIES	\$50	2	\$100
	COFFEE TABLE	NATURAL BROWN	IVY BRONX	\$249.99	1	\$249.99		DINING TABLE VASE	BLACK	SULLIVANS STORE	\$19.99	1	\$19.99
	DINING TABLE	WALNUT	WADE LOGAN	\$315	1	\$315		ARTIFICIAL PLANTS EUCALYPTUS STEMS	GREEN	VGIA	\$16.99	1	\$16.99
	AREA RUG	BURNT ORANGE & BEIGE	BIRCH LANE	\$455.27	1	\$455.27		WOOD CHAIN	OFF WHITE	PEAKOLY STORE	\$29.99	1	\$29.99
	SCONCE	BLACK & CLEAR	JOSS & MAIN	\$89.83	1	\$89.83		DECORATIVE BOOK	GRAY	ELEMA STORE	\$27.70	1	\$27.70

*CLICK ON THE PRODUCT IMAGE TO SEE PRODUCT DETAILS

GRAND TOTAL \$2969.76

OneTa Design

NEXT STEPS

I Final Review and Approval

We will present you with the completed designs, which incorporate all the feedback you've provided throughout the project. This includes the final versions of the floor plans, elevation drawings, and immersive 3D visualizations. It is crucial that you review these thoroughly to ensure that every detail aligns with your expectations. Once approval is secured, we will provide you with all necessary specifications and documentation needed to begin the implementation. This includes detailed instructions for contractors and builders, ensuring that the execution of the design is faithful to the agreed specifications.

II Ongoing Support and Adjustment

As the design comes to life, we remain committed to supporting you through the implementation phase. We will be available to address any unforeseen challenges or necessary adjustments, ensuring a seamless realization of the project.

III Final Walkthrough

Upon completion of the implementation, we will conduct a final walkthrough with you. This step is essential to ensure that the finished space meets your standards and our quality expectations. Any minor tweaks or final touches will be addressed to guarantee your complete satisfaction.

OneTa Design

THANK YOU

